



WWW.HALFWAYCREEK.ORG

Currents

JANUARY 2015

ANNUAL MEETING—FEBRUARY 1

You are invited to come to the annual meeting in the life of the church as the congregation prepares to move ahead into the future. It will take place after worship

on February 1. **THERE IS ONE SERVICE THIS DAY AT 10:30 A.M.** One of the marks of discipleship here at Halfway Creek is to “build relationships that foster faith.” That is

what we will strive to do in this meeting and in the life of the church!

ANNUAL REPORTS

The annual reports will be mailed out January 21. Please read through it, enjoy the pictures

from the last year, and give thanks to God for all that Halfway Creek has done in the last year to

“Reach out to share Christ with all.”

CONSTITUTION CHANGES

Over the past couple of years, we as a congregation have updated our constitution to reflect the activities of Halfway Creek Lutheran Church and the Model Constitution for Congregations of the ELCA. About every two years, the ELCA updates

the model constitution. That was done in 2013. Our current constitution does not yet include those changes/updates. At the annual meeting we will seek approval to add these changes/updates to our current HCLC constitution. You can view the “draft”

constitution on our website under “resources.” We will also have copies available at church. If you would like a copy mailed to you, please contact the church office at 608-526-3701.

YOUR 2014 FINANCIAL RECORD

A copy of your charitable giving to HCLC will be mailed out to you in late January. If you need one before then, please call

the church office (526-3701) or contact us at assistant@halfwaycreek.org to get a copy of this valuable tax tool.

HCLC financial records will be open until December 31, 2014 to accept 2014 donations.



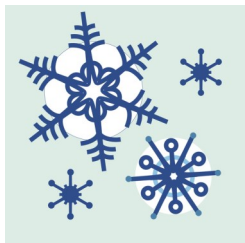
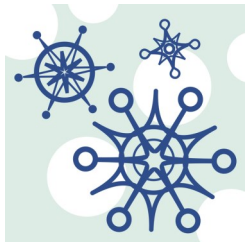
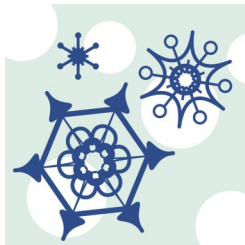
HALFWAY CREEK LUTHERAN CHURCH
W6016 County Road W
Holmen, WI 54636
Phone 608-526-3701
Pastor Jean Pagliaro
Worship at 8:00 a.m. and 10:30 a.m. on Sundays
www.halfwaycreek.org

Return Service Requested

OFFICE HOURS

The office will be open Mondays 9-5, Wednesdays 9-3 and Fridays 11-5. If you need to reach Anna Mally, you may leave a message on the answering machine or e-mail her at assistant@halfwaycreek.org.

Nonprofit Org.
U.S. Postage
PAID
Holmen, WI 54636



NEWS AT HALFWAY CREEK

THEOLOGY UNCORKED—JANUARY 27, 6:30 P.M.

All women are invited to attend! We will meet at the Holmen Meat Locker once a month to discuss topics of faith and life, as we enjoy wine or another preferred beverage. Pastor Jean leads the group and we will also be with women from Journey and Holmen Lutheran churches. Please join us!

COOKIE WALK THANK YOU

A special thank you to everyone who baked cookies and purchased cookies from the December cookie walk. We made \$280.50 from the event towards the purchase of a condenser choir microphone.

SUNDAY SCHOOL THANK YOU

On December 14th we held our annual Christmas Program. It was a great program! Thank you again to everyone that worked so hard to make this such a wonderful ministry. That morning, we also took up a free will offering for the Sunday School program which is self sufficient and depends on everyone's generosity to continue to reach so many young people for Christ. Thank you so much. Thank you also to the parents who faithfully bring their children to Sunday School so that we can teach them more about God's love in Jesus Christ.

**** Sunday school will resume January 4, 2014 ****

SUNDAY SCHOOL NEWS

Sunday School will resume on **January 4th** with a Prayer, Pajamas, Pancakes, & Pals Party! So wear your pjs, bring a friend, and join in the fellowship of breakfast and a movie with your Sunday School friends. Also mark your calendars for **January 25th**, the Sunday School children will be singing at the 10:30 worship service.



**Mally Family
Ringing the
Bells for the
Salvation
Army!**



TREASURER'S REPORT



Year to date budget as of December 15, 2014	
General Fund Income:	\$130,282. 96
General Fund Expenses:	\$126, 843. 10
General Fund Net Gain:	\$3, 693. 36

SECOND CENTURY COMMITTEE UPDATE—DECEMBER 2014

Progress continues on the new Halfway Creek Lutheran Church addition. Some highlights of the past month include:

- Installation of steps between the first and second floor
- Installation of septic line from the addition to the septic system
- Rough in for electrical and I.T. wiring
- Roof finished
- Insulation and sheetrock on the ceiling under the roof of the narthex and entry
- Sub flooring between the church and new addition
- Insulation and sheet rock on about 50% of the exterior walls
- Concrete poured for canopy drive through

As the construction progresses, the S.C.C. is working on the details of the interior finishes. The flooring has been ordered and is now in stock at the flooring vendor, the I.T. team continues their hard work in preparing the addition for computer, internet and phone service. (Thank you I.T. team for your hard work.) The S.C.C. has recommended approval for the "loft" and stair railing designed by David Gates. We are blessed to have such a truly gifted artisan in our congregation. We have had a landscape designer start some preliminary drawings. We have had the audio/visual systems designed. Casework design has been completed and ordered. We are still working on furnishings for the addition.

Olympic Builders has donated about 240 linear feet of pre-stained wood trim. An additional 100 linear feet of trim is available but needs to have the stain removed and re-stained. They have also donated 10 pre-stained door casings and an additional 2 or 3 door casings that also need to have stain removed and re-stained. Thank you Olympic for the donation. We are looking for someone within the congregation who has experience with wood staining and refinishing to lead this effort to refinish the trim. If you are interested, please contact someone on the 2nd Century Committee.

The 2nd Century Committee is also looking for volunteers to head up a landscaping team. Please let us know if you are interested in this.

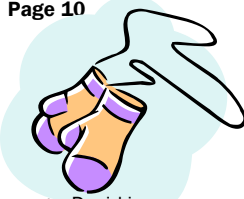
We expected the outside masonry to begin shortly. We found out recently however, that an accident at the masonry factory destroyed most of the bricks that were to be used on our project. The masonry work may be delayed until March.

In the next month, work will continue on insulation and sheetrock on the exterior walls and interior walls. Interior doors have arrived will start to be hung as the sheet rock is installed. The canopy may be constructed. Mechanical systems will continue to be installed.

As we planned this project, our financial plan stated we would have raised \$475,000 for the building project by the time the addition was completed. As of this writing, we are pleased to announce we have actually raised nearly \$520,000. Thank you all for your financial support to this project!

The congregation's approval of the project was based on an estimated \$1,082,000 total cost for the project. As of this writing, our estimated expenditures are at \$991,502. Included in the expenditures is still the \$75,000 contingency figure we used for unexpected expenses. We know we will have more expenses for I.T. and audio/visual needs. Despite some needs that have not been added to the project ledger yet, we are still under budget and are confident we will remain well under the \$1,082,000 figure.

From the Second Century Committee, we again thank you all for your support and prayers. This has been an exciting process with a lot of hard work and time put in by many members of this congregation. As the construction progresses, we get more and more excited by what is being created here. We know the congregation will be pleased when they see the finished building. We are still planning for substantial completion around Easter.



NEWS AT HALFWAY CREEK—CONT.

A NOTE FROM THE PARISH NURSES

On October 19, 2014, we had the pleasure of hearing David Berling share his message of faith and courage. David is a Holmen native, who in April 2007 was involved in a private airplane crash. David suffered multiple injuries requiring amputations of his legs, 28 surgeries and a hospital stay of over two months. He, along with his wife and dad wrote about his experience in a book titled **“Just Living the Dream – No Way Out But Through”**. For the Parish Nurse message this month, I would like to reference one of the chapters written by David’s father, Kim. The title of the chapter is “Afterthoughts”. When something traumatic happens to your family, you are not prepared. Here are some the lessons their family learned.

- 1. Accept help.** You can’t do it alone. Let other people care for lower priority responsibilities so you can focus on the high priorities. Make a list, let them pick something.
- 2. Understand you will be vulnerable to the opinions of others.** When people share a personal concern for the patient, you expect they are sharing honest opinions for the sake of the patient. The circumstance influencing their decisions and experience may not be applicable to your situation.
- 3. Overcome your blind belief that all people know their jobs and excel at them.** Even when someone is doing their absolute best to help you or the patient, they are limited by their own abilities. Mistakes will always be made; the key is to minimize the outcome. Vigilance is a must.
- 4. Understand there is only one final decision maker.** The patient’s medical proxy may not be you, and the choices made on behalf of the patient may not be the ones you would choose to make. You have to let go and accept it.
- 5. Overcome your own emotions.** Whether you feel guilty, angry, helpless, or spiteful, you cannot be of any help if you are bringing your emotions into an already volatile situation. Stop thinking about yourself and focus on what is best for the patient.
- 6. Challenge the status quo.** Two ways of doing things are the easy way and the right way. While they are not mutually exclusive, many shades of gray exist between them. This leads us to the next piece of advice.
- 7. Know the priorities.** Don’t let the little details detract you from the big decisions. The Berlings had a list: Keep David alive, then save as many limbs as possible, etc.
- 8. Everyone’s pain and injuries are paramount to them.** No one should compare two separate cases. All the circumstances are different. We cannot judge the impact of anyone else’s injury or illness on them.
- 9. Don’t forget God.** If you knocked on God’s door with our prayers when your loved one first got injured or sick, stay in touch with him.
- 10. Always be an advocate for the patient.** By doing many of the items mentioned above, you will be the flesh-and-blood guardian angel the patient needs. Don’t assume that when the patient becomes conscious that they can immediately make their own choices. While the law may say they can, they need you more than ever because they have diminished mental abilities due to their medications and injuries.
- 11. People will change.** Be a part of their lives and help with and understand the transition.
- 12. Life changes for everyone.**

SERVING OTHERS IN OUR CONGREGATION

		ACOLYTE	SEXTON	ALTAR GUILD	OFFERING COUNTERS	LECTOR	COMMUNION ASSIST.	USHERS
JAN 4	800	Jack Bringe	Mike Martin	Carrie Payne Nicole Stumlin	Rhonda Britton Sonja Nelson	Gabby Hansen	Ruth Jostad	Dave & Katrina
	1030	Alyssa Rink	Morgan Jostad			John Daily	Sonja Nelson	Matt & Dawn Rink
JAN 11	800	Zach Mueller	Stan Schwier	Karla Johnson Hannah Scholze	Bette Pedretti Susan Jostad	Amy Noel	Rose Simon	Andy & Tina Mueller
	1030	Olivia Temp	Matt Pagliaro			Susie Johnson	Zach Johnson	Greg & Chantel Temp
JAN 18	800	Aiden Noth	Archie Achterkirch	Diane Jostad Nancy Holley	Jessie Harper Alana Larson	Ruth Jostad	Thelma Severson	Joe & Melissa Noth
	1030	Kohl Linberg	Josh Johnson			Kennedy Strangstalien	Jen Strangstalien	Luke & Jesse Oines
JAN 25	800	Masen Harper	Russ Bringe	Barb Hale Bette Pedretti	Joe Noth Stephanie Lubinsky	Pat Martin	Mike Martin	Matt & Jesse Harper
	1030	Ella Gander	Dave Bringe			Lee Anderson	Rayna Hendrickson	Trent & Bridget Gander

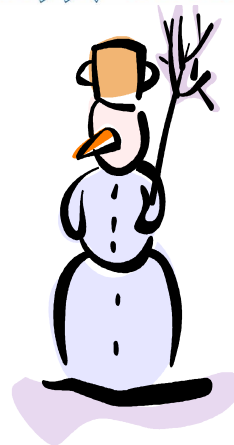
STEPHEN MINISTRY INFORMATION SESSION

Saturday, February 7, 2015, Holmen Lutheran Church will host a Stephen Ministry Introductory Workshop from 9:00 A.M.–1:00 P.M. Registration begins at 8:00 A.M. This half-day, three-session workshop is designed to help congregations catch a vision for strengthening their caring ministry through equipping laypeople as caregivers. During this event, participants will also develop caregiving skills they can use right away. The cost of this workshop is \$15 per person or \$50 for a group of four or more from the same congregation. **For more information or to register for this half-day Stephen Ministry Introductory Workshop, call Stephen Ministries at (314) 428-2600 or visit www.stephenministry.org/workshop.**

JANUARY BIRTHDAYS

1	10	22
Joey Mally	Duane Crocker	Rylend Tuquero
3	Ben Mally	23
Edward Swackhamer	Lonnie Oines	Kathie Severson
4	Edward Scholze	25
John Noel	13	Chance Brandau
Carrie Payne	Zachary Mueller	26
5	14	Erica Nichols
Jeramia Stankey	Mary Jane Nelson	Matt Rink
6	Trevor Plomedahl	Camden Thiele
Keith Casberg	15	Melissa Noth
Audrey Clark	Lisa Betsinger	28
7	18	Ethan Heiser
John Stasiak	Jordyn Stasiak	Corey Hendrickson
9	20	30
Paula Hammes	Donna Anderson	Ellen Stankey
	James Werner	

Happy Birthday



QUILTING STARTS IN FEBRUARY

The Halfway Creek Women of the ELCA will start quilting in February and continue through March; all are welcome to join the fellowship at church. Please watch for more information in the February newsletter.

HALFWAY CREEK COMMUNITY MEAL SERVERS

Halfway Creek is scheduled to serve Come to Supper at Our Savior's in La Crosse for January 20—4:30-6:30pm. All are welcome to volunteer!



**NEWS AT HALFWAY CREEK—CONT.
VISION BOARD DECEMBER 11, 2014 MINUTES**

David Gates called the meeting to order at 6:33 pm.

Pastor led us in a devotional from “Dancing Down the Hallway”.

John Daily presented information about the building project. The Second Century Committee recommended payment of the following: Assorted Owner Direct Invoices \$18,538.55, Olympic Builders Draw \$20,425.00. Marna Holley made the motion to pay these invoices. Susan Chase seconded. Motion approved.

Five change orders were presented for approval: Credit for windows not used in lieu of restored stained glass, - \$1,608.66. Add labor/material for exterior masonry work, \$4,200.00. Revision to increase length of partition in fellowship hall, \$1,338.00. Credit for cabinetry and counters from original contract to owner responsibility, - \$7,000.00. Add window on North side of east wall and relocate window on south side east wall of fellowship hall, \$1,274.46. Brian Mueller made a motion to approve the change orders. Sydney Craig seconded. Motion approved.

John Daily said there will be change orders for the railings, and for electrical work for sound/AV outlets coming next month.

More than \$ 518,251.00 has been raised so far in support of the building project. Olympic Builders has donated wood trim material to the project.

Secretary’s Report was given. Bob Bandoli made the motion to approve. Shelly Vander Linden seconded. Motion approved.

Bob Bandoli reported that the church finances are currently in the black. The church’s mission commitment has been paid current. The \$75,000.00 transfer to the building fund has been completed.

Bob Bandoli made a motion, on recommendation of the Second Century Committee, that the Building Fund maintain an initial reserve of \$40,000.00, covering twelve (12) months of loan payments. Shelly Vander Linden seconded. Motion approved.

There was discussion of the possibility of an additional liaison to the Second Century Committee, but it was decided that another liaison was unnecessary.

Pastor Jean reported 40 people attended the 8:00 am service on December 7, which was a traditional reflection service. She reported 255 people attended the Sunday School Christmas program at the 10:30 service. The service on Christmas Eve will be at 2:00 pm, 4:00 pm, and 9:00 pm. The Vision Board needs to discuss if the congregation should supply stipend for a cell phone for Pastor Jean. Pastor Jean will supply the Vision Board with estimates at the January meeting.

Brian Mueller made a motion that we suspend contributions to the Pastor’s Sabbatical Fund until the balance goes under \$5,750.00, and cap the fund at \$5,750.00 in the future. Bob Bandoli seconded. Motion approved. The Vision Board will discuss options about where the contribution will be redirected, at the January meeting. This was per Pastor’s recommendation as this is common practice among other congregations.

There have been efforts made to reach out to re-involve members in church life who had become isolated over the past year. Brian Mueller will be investigating options concerning the altar with the Worship and Liturgy team at their next meeting.

Kathleen Jensen has filled in for a few hours to assist in the church office by getting a start on bulletins and the newsletter. Marna Holley made a motion to approve compensating Kathleen at a rate of \$12.00 an hour. Susan Chase seconded. Motion approved.

Anna Mally has been hired as the new office assistant and is scheduled to start on December 15th. Brian Mueller made a motion to approve the hire. Susan Chase seconded. Motion approved.

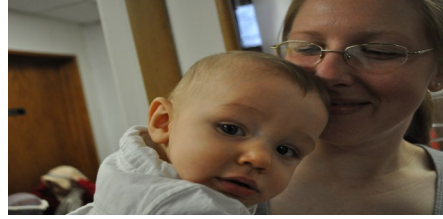
Discussion of the Outreach/Fellowship Team was tabled until the January meeting.

Bob Bandoli presented the Vision Board with the first draft of the church budget, which will be finalized at the January meeting.

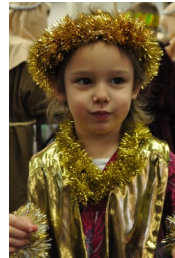
Marna Holley will bring a proposal concerning branding and a logo to the January meeting.

Bob Bandoli made a motion to adjourn. Brian Mueller seconded. Meeting adjourned at 8:54 pm.

NEWS AT HALFWAY CREEK—CONT.



Sunday School children at their annual Christmas Program!



NEWS AT HALFWAY CREEK—CONT.



Sunday School children at their annual Christmas Program!



