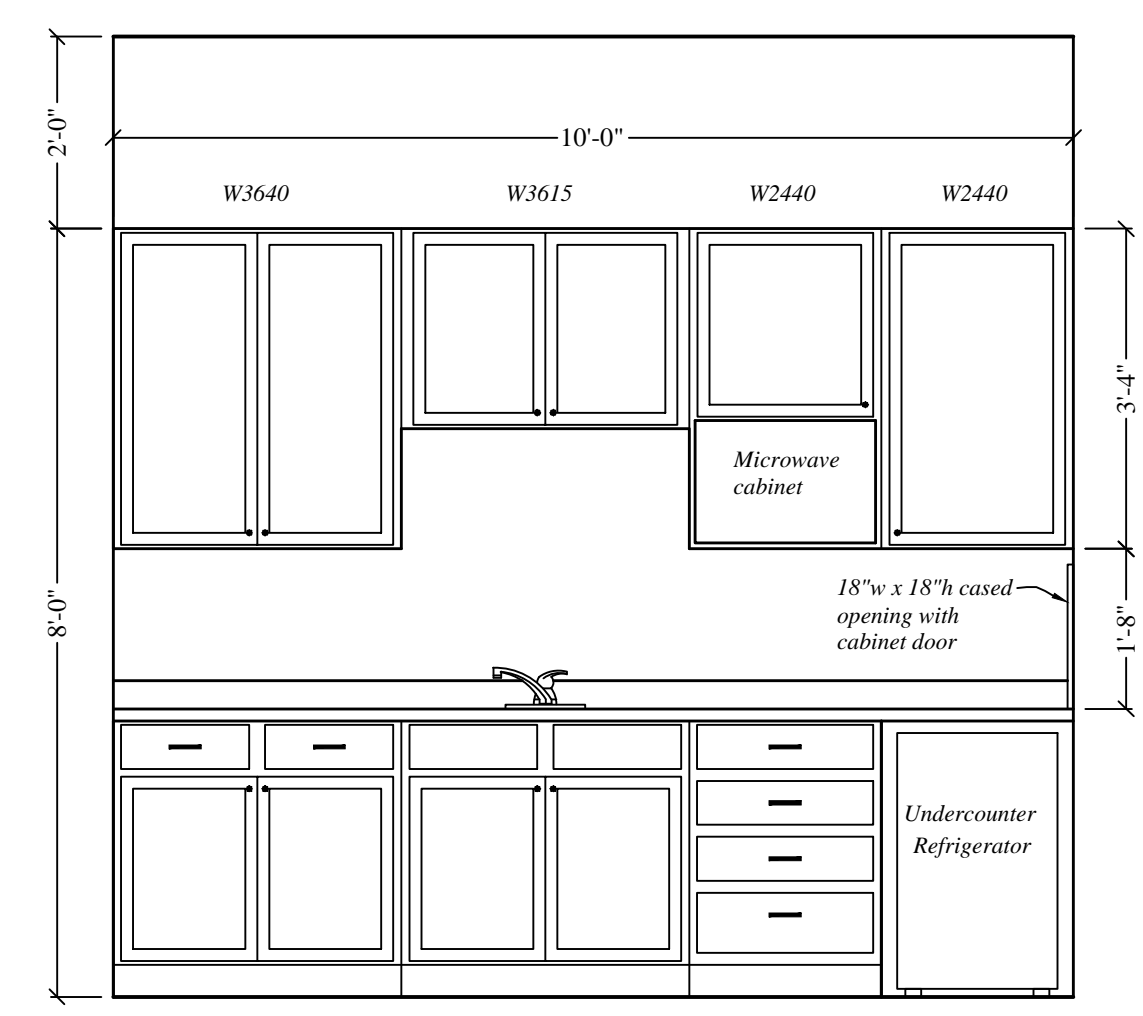
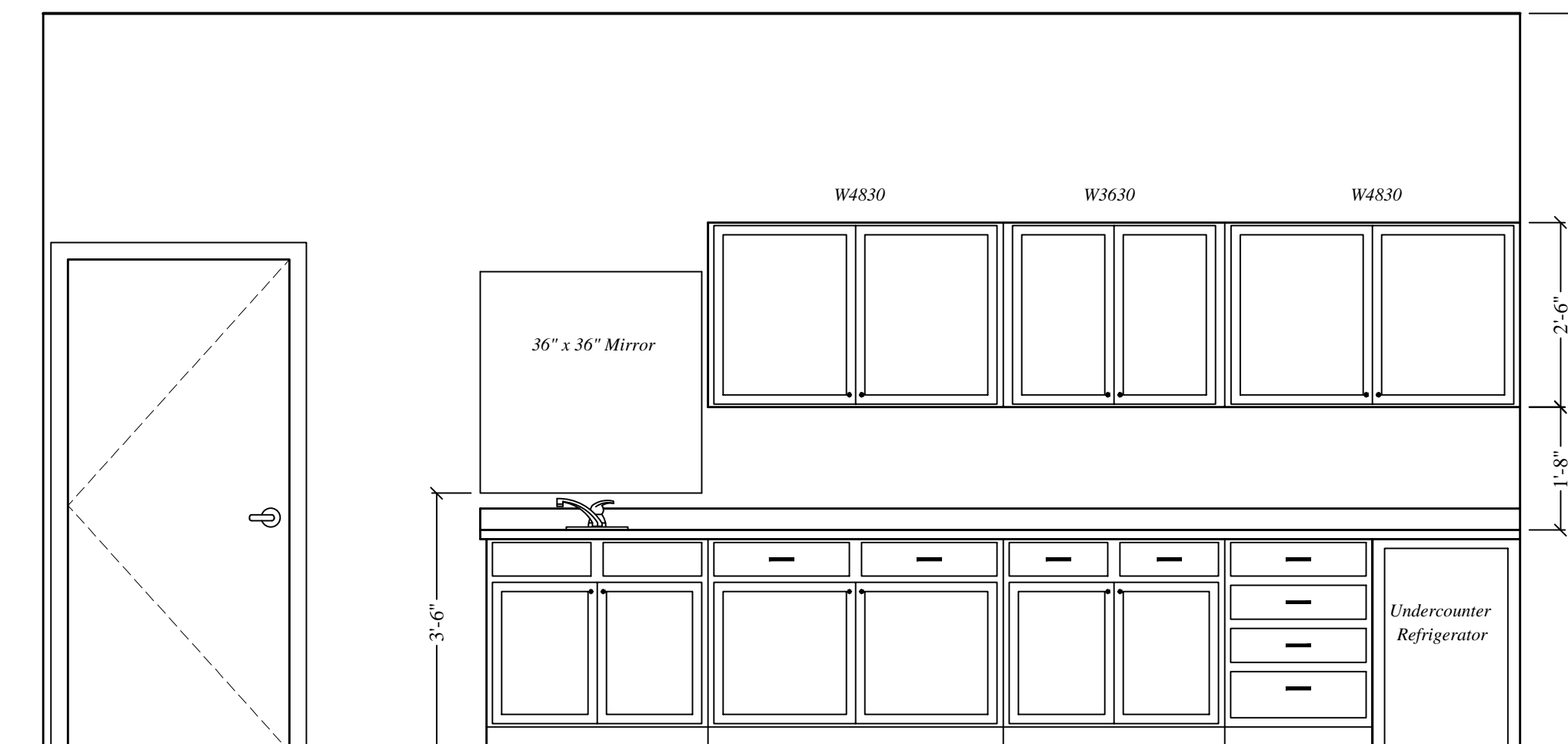


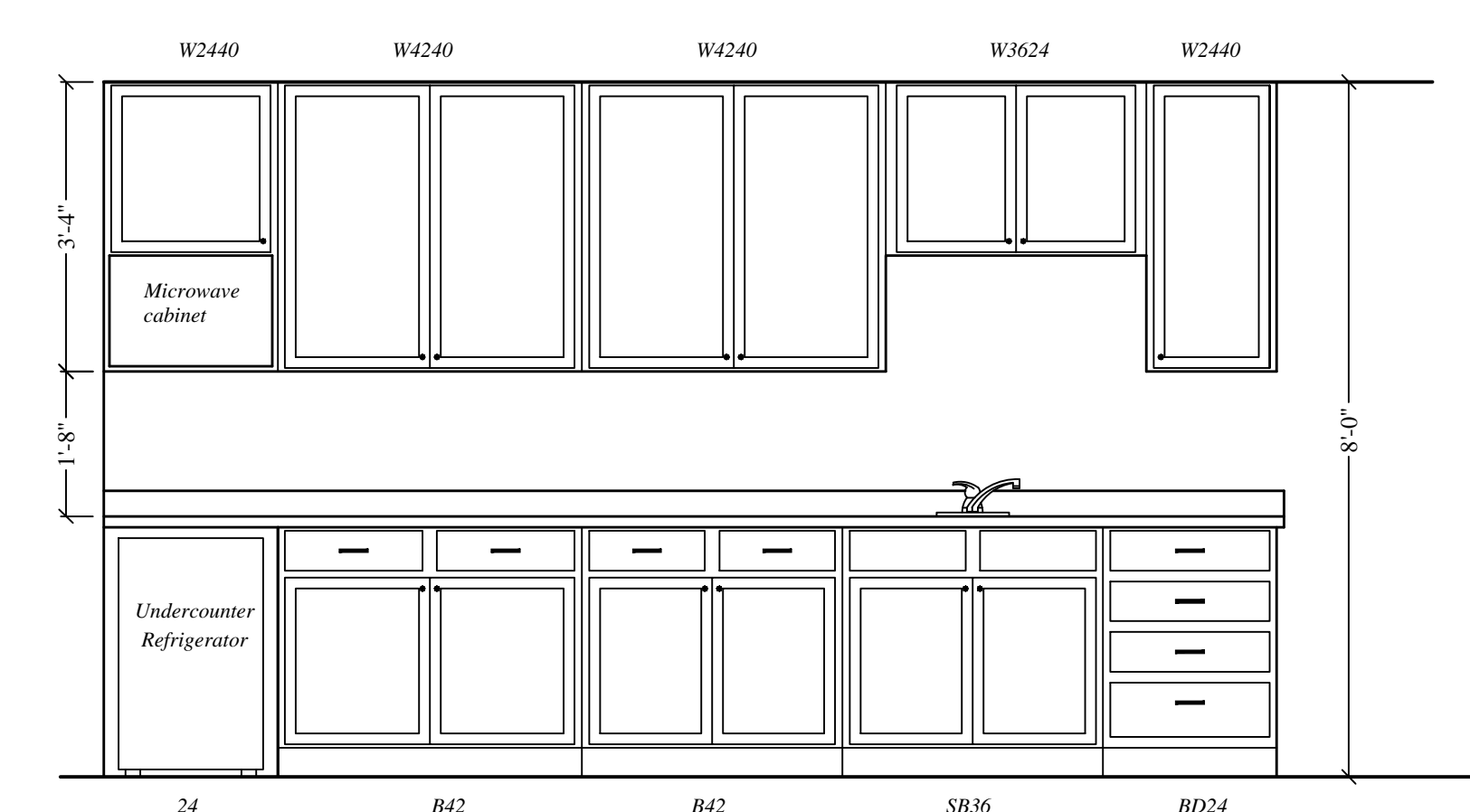
Narthex #201 (Cabinets by Owner)
Scale: 1/2" = 1'-0"



Classroom #207
Scale: 1/2" = 1'-0"



Classroom #210
Scale: 1/2" = 1'-0"



Fellowship Hall #111
Scale: 1/2" = 1'-0"

Class A, architectural laminated asphalt shingles on 30# roof felt on 1/2" OSB sheathing with ply-clips, 8d nails @ 6" oc edges & 12" oc inner. Min. 6" ice & water shield at all eaves and 3' each way in all valleys. Shingle over ridge cap at all ridges, typical.

Manufactured wood roof trusses, 42'-0" clear span, gable trusses, 24" oc, 16" energy heel, 50 psf ground snow load, total roof load = 58 psf (38+10+10) unless noted otherwise. Attic vent shaft between every truss, typical. Manufacturer shall design trusses to comply with the 2009 IBC. Submit original stamped and sealed engineering plans to Architect for submittal to the state for review. Contractor shall provide and set all required bracing per the truss calcs. Set & brace per TPI-HIB handbook. Provide attic smoke separation at 3000 sq. ft. max., 1/2" OSB on one side of roof truss. Provide Simpson H-3 truss tie down at each end of truss.

Preformed attic vent in every truss space

1x6 over 2x12 subfascia for stepped fascia, 24" typical eave overhang with prefinished aluminum woodgrained fascia, vented soffit & trim

Brick soldier course above all upper level doors and windows with precast keystone, corbeled 1/4" at arch top windows.

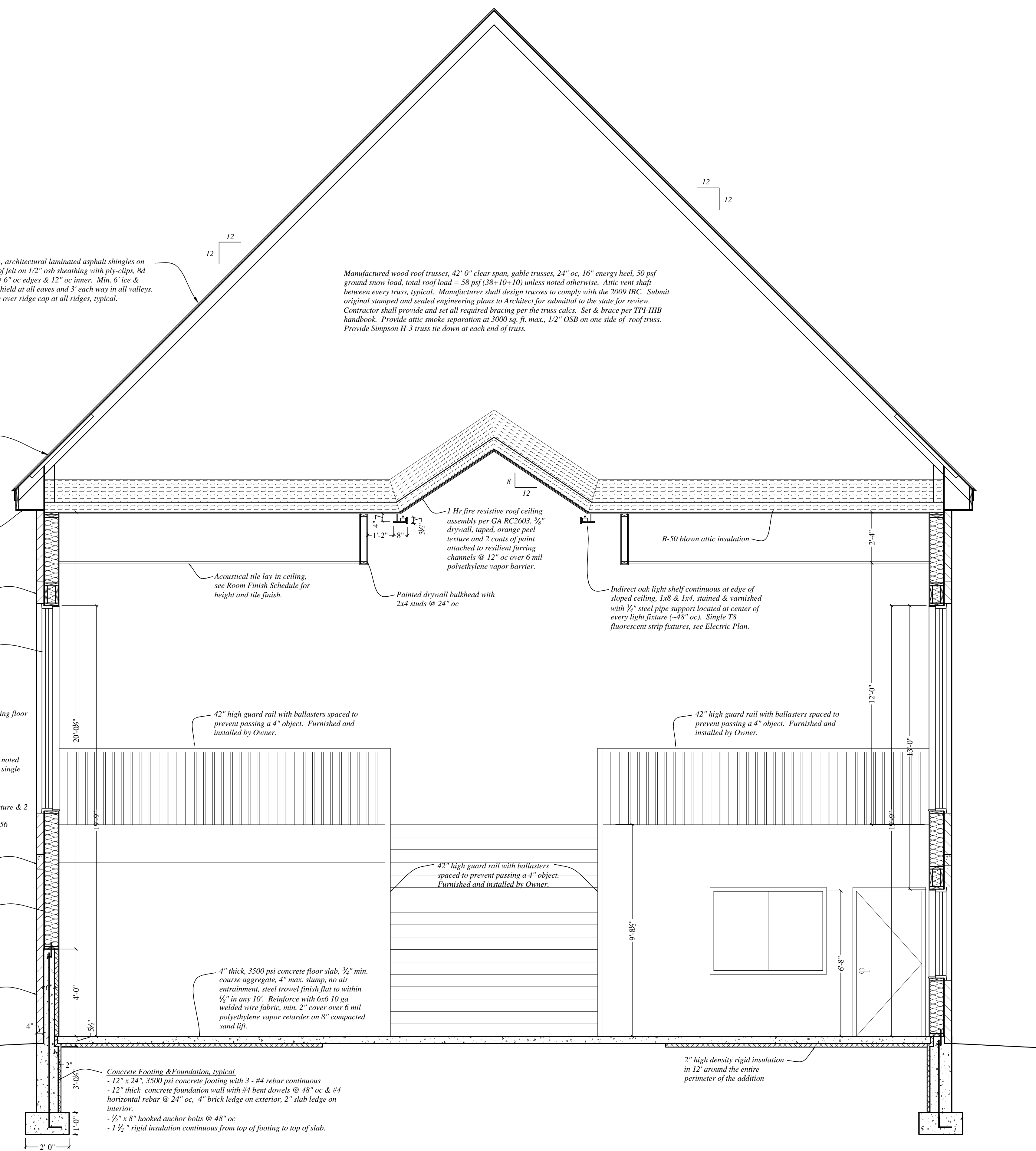
Vinyl windows with drywall returns at head and jams and cultured marble sill extending 1/2" beyond face of wall.

Exterior Bearing Walls
- Contractor to verify & match existing floor to floor elevation
- Full height, 4" brick veneer
- Tyvek building wrap
- 1/2" OSB sheathing
- 2x6 #2 SPF studs @ 16" oc unless noted otherwise with double top plate and single treated base plate
- R-19 fiberglass batt insulation
- 6 mil poly vapor retarder
- 1/2" drywall, taped, orange peel texture & 2 coats of paint.
- 1 hour fire rated assembly, UL U356

8" h x 48" sand texture precast cap stone block. Color to be selected by Church.

2x8 studs @ 16" oc, condition occurs where concrete wall is above the lower floor elevation, north & east walls.

4" precast rock face veneer block. Color to be selected by Church.



42" high guard rail with ballusters spaced to prevent passing a 4" object. Furnished and installed by Owner.

42" high guard rail with ballusters spaced to prevent passing a 4" object. Furnished and installed by Owner.

42" high guard rail with ballusters spaced to prevent passing a 4" object. Furnished and installed by Owner.

4" thick, 3500 psi concrete floor slab, 1/2" min. course aggregate, 4" max. slump, no air entrainment, steel trowel finish flat to within 1/8" in any 10'. Reinforce with 6x6 10 ga welded wire fabric, min. 2" cover over 6 mil polyethylene vapor retarder on 8" compacted sand lift.

Concrete Footing & Foundation, typical
- 12" x 24", 3500 psi concrete footing with 3 - #4 rebar continuous
- 12" thick concrete foundation wall with #4 bent dowels @ 48" oc & #4 horizontal rebar @ 24" oc, 4" brick ledge on exterior, 2" slab ledge on interior.
- 1/2" x 8" hooked anchor bolts @ 48" oc
- 1 1/2" rigid insulation continuous from top of footing to top of slab.

2" high density rigid insulation in 12" around the entire perimeter of the addition

Section "A1"
Scale: 3/8" = 1'-0"

| | |
|----------------|-------------------|
| Project: | Sheet Description |
| By: | Sections |
| Date: | 2/24/14 |
| Last Revision: | 1 |
| Scale: | As Noted |
| File: | |
| Revision: | Date: |